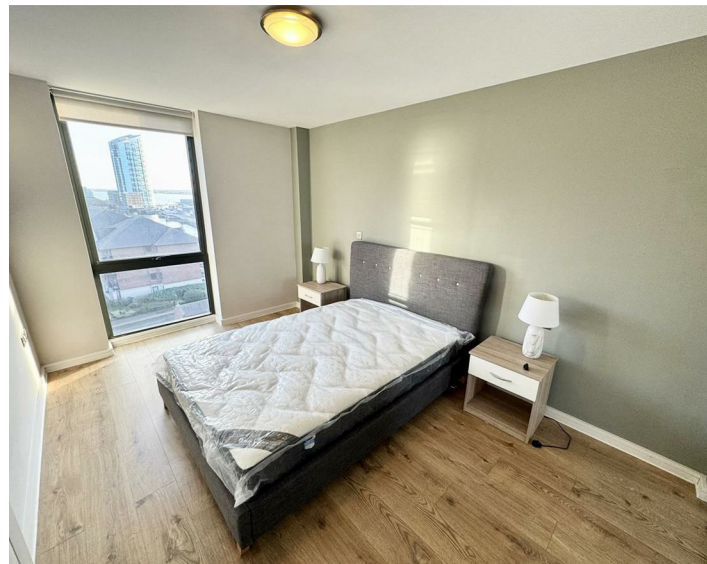


Apt 615, Quay Central 9 Jesse Hartley Way, Liverpool, L3  
£885 Per Month

www.  
cityresidential  
.co.uk





About the Property

Available from September 16th!

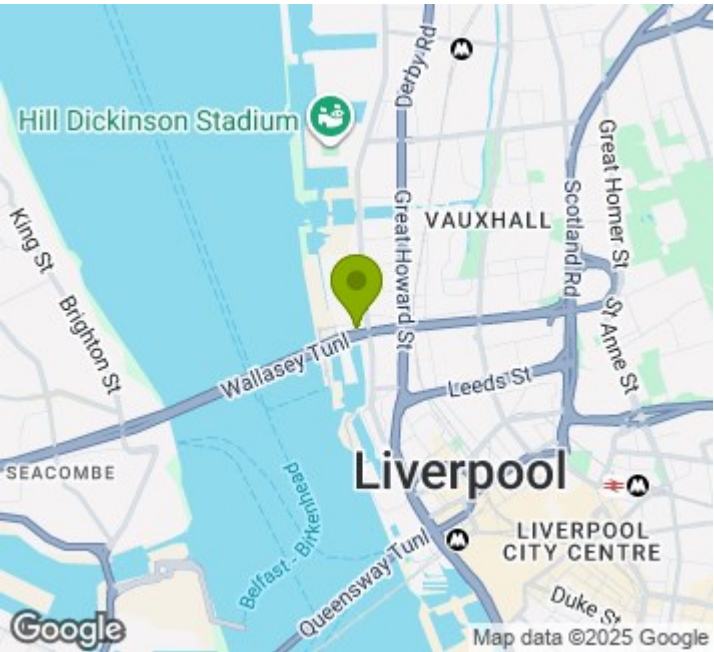
This stylish one-bedroom apartment is located in the highly sought-after Quay Central development – a standout addition to Liverpool's iconic skyline. Set on the sixth floor, it offers modern city living in one of the city's most up-and-coming areas.

The property features an inviting entrance hall, a bright open-plan living and dining space, and a sleek fitted kitchen with integrated appliances. A spacious double bedroom and a contemporary bathroom complete the accommodation.

Residents also benefit from a dedicated cycle store and lift access to all floors, ensuring convenience and comfort.

Don't miss out on the chance to call this stunning apartment your new home. Contact us today on 0151 231 6100 to arrange a viewing.

- Available from September 16th!!
- Fully furnished
- Sixth Floor Apartment
- Amazing Waterfront Location
- Early viewing highly recommended
- No Parking
- EPC Rating - B
- Council Tax Band - B
- Deposit Payable £1021



Energy Efficiency Rating

	Current	Potential
Very energy efficient - lower running costs		
(92 plus) <b>A</b>		
(81-91) <b>B</b>	<b>82</b>	<b>82</b>
(69-80) <b>C</b>		
(55-68) <b>D</b>		
(39-54) <b>E</b>		
(21-38) <b>F</b>		
(1-20) <b>G</b>		
Not energy efficient - higher running costs		
<b>England &amp; Wales</b>	EU Directive 2002/91/EC	



City Residential  
81/87 Victoria Street, The Old Haymarket, Liverpool L1 6DG  
T: 0151 231 6100 F: 0151 231 6105  
E: sales@cityresidential.co.uk



► WWW.  
cityresidential  
.co.uk ◀